



BISHOP MUSEUM

Bishop Museum's
Education
Guide
to Programs & Exhibits



2004 - 2005

Education Department

Administrative Office

(808) 848-4168
 education@bishopmuseum.org
 www.bishopmuseum.org/education

School Visit Reservation Line

(808) 848-4168
 education@bishopmuseum.org
 www.bishopmuseum.org/education

Special Programs

Holoholo Science Outreach Program

Bring science to your classroom!
 (808) 847-8239
 holoholo@bishopmuseum.org
 www.bishopmuseum.org/education/outreach.html

Planetarium and Astronomy Information

(including upcoming astronomy events, moon phases, meteor showers, etc.)
 (808) 848-4136 (Sky Hotline)
 hokupaa@bishopmuseum.org
 www.bishopmuseum.org/planetarium

General Contact Information

General Information

(808) 847-3511
 www.bishopmuseum.org

Archives

(808) 848-4182
 www.bishopmuseum.org/research/cultstud/libarch

Banquet Facility Rentals

(808) 848-4106
 www.bishopmuseum.org/services/facility

Bishop Museum Press

(808) 848-4135
 www.bishopmuseum.org/press

Hawaiian and Pacific Studies

(808) 848-4126
 www.bishopmuseum.org/research/cultstud

Library

(808) 848-4148
 www.bishopmuseum.org/research/cultstud/libarch

Membership

(808) 847-8296
 (808) 848-4172 (Member Hotline)
 www.bishopmuseum.org/membership

Natural Sciences & Research

(808) 847-8204
 www.bishopmuseum.org/research

Shop Pacifica

(808) 848-4158
 www.bishopmuseum.org/store

Kama'aina Kids - Intersession at Bishop Museum

www.kamaainakids.com

Northwestern Hawaiian Islands

www.explorers.bishopmuseum.org/nwhi



Hawaii Maritime Center

The Hawaii Maritime Center, a part of Bishop Museum, is dedicated to preserving, interpreting, and exhibiting the rich ocean and seafaring heritage of Hawai'i. Features include state-of-the-art exhibits about voyaging canoes, early Western seafaring explorers, the 19th century whaling industry in Hawai'i, and the history of harbor news reporting.

New! Koholā Lele, Leaping Whale!

Hawaii's Native Seamen and Their Whaling Legacy. Thousands of native Hawaiians went to sea on whaling ships in the nineteenth century. This new exhibit tells their story.

Whaling Activity

In this hands-on program, students will live the history of Hawaiian whalers—The island life the Hawaiians left behind, and their life on board the whaling ships. Coming October 2004!

Navigating Change

An Educational Role Playing Experience!

Students will engage in simulated biological and ecological research projects. They will take on roles, functions, and duties of field-study biologists performing "rapid ecological assessments," or REAs, for land and marine management and research purposes. Students will engage in role-playing as members of a Polynesian voyaging canoe to better understand the need to work together in harmony and balance in order to accomplish a task.

Student fees:

- **Hawaii Maritime Center and Falls of Clyde** \$3.00
- **Canoe Activity Combo**
 Hawaii Maritime Center, Falls of Clyde and Canoe activity
 (Avaible October 2005)
 \$5.00
- **Whaling Activity Combo**
 Hawaii Maritime Center, Falls of Clyde and Whaling activity
 \$5.00
- **Northwestern Hawaiian Islands Combo**
 Northwestern Hawaiian Islands, Canoe activity,
 Hawaii Maritime Center and Falls of Clyde \$6.00

Please call for more information and reservations.
 Pier 7 · Honolulu, HI 96813 · 808-536-6373
 www.bishopmuseum.org/hmc
 Program supported in part by the Gannet Foundation and the Honolulu Advertiser Foundation.

Amy Greenwell Ethnobotanical Garden

Explore the world of Hawaiian ethnobotany—the traditions of a people and their plants.

As you walk through this 15-acre garden, you will see plants that grew in traditional farms and native forests of Kona before Captain Cook arrived. Discover how skillful the Hawaiian people were at farming and horticulture, and at using the plants of the native Hawaiian landscape. It's an enriching cultural experience you will not want to miss!

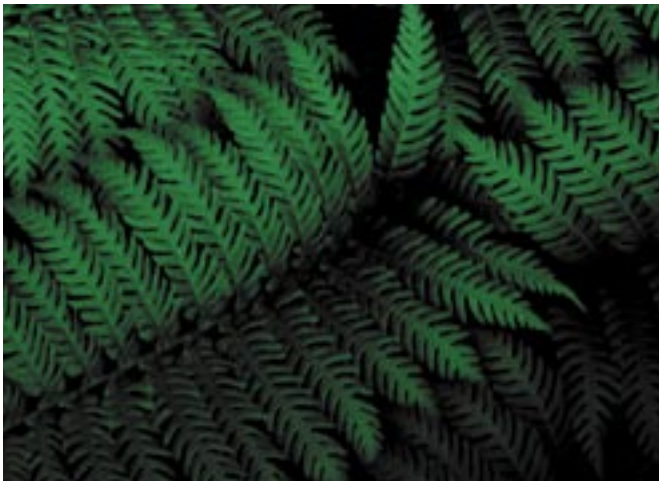
Student Fees:\$3.00

Please call for more information and reservations.

P.O. Box 1053 · Captain Cook, HI 96704
808-323-3318 (Hawai'i)

www.bishopmuseum.org/greenwell

Bishop Museum's **Education Guide** to Programs & Exhibits 2004 - 2005



BISHOP MUSEUM

Contents

Welcome.	3
Program Packages	4
Program Descriptions by themes . . .	5 – 8
Planetarium Programs	9–10
Continuing Exhibits	11
Changing Exhibits	12
Planning Your Visit/Teacher's Checklist	13
Museum Sleepover & After Dark Programs	14
Lending Boxes	15
Culture & History Outreach Program . . .	16
Holoholo Science Outreach Program . . .	17
Bishop Museum Day Camp Programs with Kama'āina Kids	18
Guides & Materials	18
Educators' Workshops, Programs, & Lectures.	18



I am delighted to present the education guide to programs and exhibits for the 2004-2005 school year.

In one field trip, you can experience so much in culture, art, science, and history! For example:

- Hawaiian and Polynesian Halls with their priceless collections of artifacts;
- Exciting hands-on exhibits on architecture (Fall 2004), Strange Matter (Winter 2005) and Robotic Reptiles (Spring/Summer 2005);
- Educational programs on twenty different topics ranging from solar energy to garden tours to the art and science of surfing;
- Interactive planetarium shows in the Watumull Planetarium.

Through our many resources, we are committed to serving teachers by helping extend the knowledge and understanding of students. We do this by making learning engaging, interactive, hands-on, exciting and fun. Our programs and exhibits are designed to help educators present abstract concepts in a concrete and accessible fashion.

All of our programs are aligned to state and national standards (further details: www.bishopmuseum.org/education).

So come join us this year for a well-rounded field trip: see a planetarium show, explore a traveling exhibit, see the wonderful artifacts of our traditional halls, experience a program on pohāku or kapa making or surfing.

Have fun & learn!

Mike Shanahan
Education Director
Bishop Museum
mikes@bishopmuseum.org
808-847-8235

We have created three exciting ways to visit Bishop Museum:

A) Hawaiian Culture Experience

- Ali'i: 30-minute guided program and 30-minute self-exploration of exhibits.
- Kapa or Pōhaku: 30-minute guided demonstration and 30-minute personalized collection activity.
- Nā Hana Noi'i, The Science of Hawaiian Culture: 30-minute presentation.

B) Museum Experience

- One themed program of your choice, see pages 5–8.
- Planetarium program of your choice, see pages 9–10.
- One Current Exhibit visit.

C) Design Your Own Visit

- Select from our exhibits and programs to design your own visit to Bishop Museum.

Hawaiian Culture Experience

Hawaiian Hall guided tour

The experience is **2-1/2 hours** and consists of a series of programs.



Ali'i

Set foot into Hawaiian Hall and learn about the Ali'i who ruled before and after King Kamehameha the Great. See and experience some of the treasured symbols of the Ali'i.

- **1 hour program includes 30-minute guided program and 30-minute self-explorations**



Museum Experience

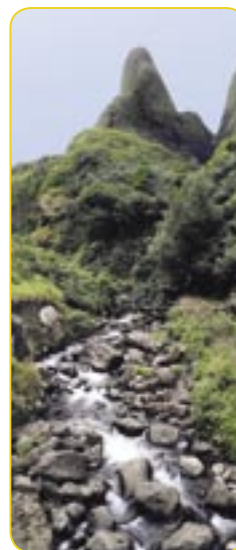
- **One themed program of your choice, see pages 5–8.**
- **Planetarium Program of your choice, see pages 9–10.**
- **One Current Exhibit visit.**

Large Group Presentation

Nā Hana Noi'i : The Science of Hawaiian Culture

See how Hawaiians did “excellent work” (Nā Hana Noi'i). Understand how Hawaiians observed their environment and worked together to use their water source for planting food crops. Learn the science behind how nature creates water for Hawaiians and for us to use. A fun, hands-on demonstration.

- **30-minute presentation**



Hands-On Demonstration (Choose 1 theme: A or B)

A) Kapa Making

Explore the art and science of making bark cloth through a step-by-step demonstration of techniques and tools.

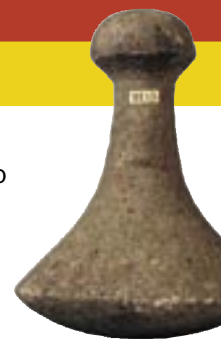
- **Grades 4 – 8**
- **Days: Monday – Friday**
- **Times: 9:00, 9:30, 10:00, 10:30**
- **1 hour program includes 30-minute demonstration of Hawaiian traditions and 30-minute personalized Kapa collection presentation.**



B) Science of Pōhaku

Step into the sandals of nā po'e kāko'i, master stone craftsmen who apply their knowledge, culture, and science in making adzes.

- **Grades 1 – 12**
- **Days: Monday – Friday**
- **Times: 9:00, 9:30, 10:00, & 10:30**
- **1 hour program includes 30-minute guided demonstration of Hawaiian traditions and 30-minute personalized Pōhaku collection presentation.**



PROGRAM REQUIREMENTS

Group size: Minimum 10, Maximum 60 (Larger groups will be split up. Our programs are designed for smaller groups.)
Required number of chaperones: Kindergarten: 1 adult per 5 students · Grades 1-12: 1 adult per 15 students

SETTLING: PLANTS – Puppets In Paradise

Become a puppeteer and act out the story of how plants and animals settled in Hawai'i.

- **Grades 1 – 3**
- **Days: Monday – Friday**
- **Times: 9:00, 9:30, 10:00, 10:30**
- **1 hour program includes 30-minute hands-on guided activity and 30-minute self-exploration of Hawaiian Hall.**



SETTLING: PLANTS – Uniquely Hawaiian

Seek out endemic, indigenous and introduced plants in this guided exploration of our gardens.

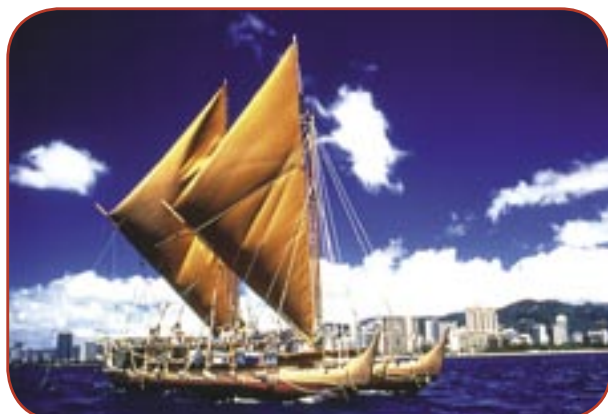
- **Grades 3 – 12**
- **Days: Monday – Friday**
- **Times: 9:00, 9:30, 10:00, 10:30**
- **1 hour program includes 30-minute hands-on guided tour and 30-minute self-exploration of Hawaiian Hall.**



VOYAGING – “Canoe” Do It?

Set sail on an imaginary adventure and discover what it takes to plan and prepare for a long canoe voyage.

- **Grades 4 – 8**
- **Days: Monday – Friday**
- **Times: 9:00, 9:30, 10:00, 10:30**
- **1 hour program includes 30-minute hands-on guided program and 30-minute self-exploration of Hawaiian Hall.**



SETTLING: PEOPLE – Ali'i

Set foot into the halls and learn about the Ali'i who ruled before and after King Kamehameha the Great. See and experience some of the treasured symbols of the Ali'i.

- **Grades 2 – 12**
- **Days: Monday – Friday**
- **Times: 9:00, 9:30, 10:00, 10:30**
- **1 hour program includes 30-minute guided program and 30-minute self-exploration of the Kāhili Room.**



SETTLING: PEOPLE – Island Community

Discover the interrelationships in a Hawaiian community through artifacts and small group work.

- **Grades 1 – 3**
- **Days: Monday – Friday**
- **Times: 9:00, 9:30, 10:00, 10:30**
- **1 hour program includes 30-minute hands-on guided activity and 30-minute self-exploration of Hawaiian Hall.**



SETTLING: PEOPLE – Island Family

Explore the traditional roles of dad, mom, and children by examining everyday Hawaiian objects.

- **Grades PS – K / For 4 – 5 year olds**
- **Days: Monday – Friday**
- **Times: 9:00, 9:30, 10:00, 10:30**
- **1 hour program includes 30-minute hands-on guided activity and 30-minute self-exploration of Hawaiian Hall.**



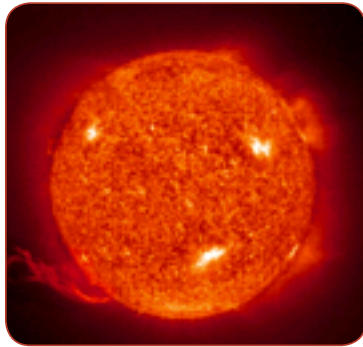
PROGRAM REQUIREMENTS

Group size: Minimum 10, Maximum 60 (Larger groups will be split up. Our programs are designed for smaller groups.)
Required number of chaperones: Kindergarten: 1 adult per 5 students · Grades 1-12: 1 adult per 15 students

Solar Power

Discover the sun's power to create electricity. Learn all about photovoltaic systems and other renewable energy resources in Hawai'i through hands-on activities and demonstrations.

- **Grades 2 – 8**
- **Days: Monday – Friday**
- **Times: 9:00 & 10:00**
- **This 30-minute program can be booked in conjunction with a solar viewing session in the observatory.**



Program supported in part by Hawaiian Electric Co., Inc.

Makahiki Games

Early Hawaiians developed their skills through various games. The Makahiki season was a time to challenge each other in these activities. Students will learn how to play ulumaika, moa pāhe'e, and other Hawaiian games.

- **Grades PS – 12**
- **Days: Monday – Friday**
- **Times: 9:00, 9:30, 10:00, 10:30**
- **30 minute program**



Island Style

Categorize natural materials and learn how Hawaiians used their natural resources to make tools for daily living.

- **Grades 3 – 12**
- **Days: Monday – Friday**
- **Times: 9:00, 9:30, 10:00, 10:30**
- **1 hour program includes 30-minute hands-on guided activity and 30-minute self-exploration of Hawaiian Hall.**



Nā Hana Noi'i:

The Science of Hawaiian Culture

See how Hawaiians did "excellent work" (Nā Hana Noi'i). Understand how Hawaiians observed their environment and worked together to use their water source for planting food crops. Learn the science behind how nature creates water for Hawaiians and for us to use. A fun, hands-on demonstration.

- **Grades 2 – 7**
- **Days: Monday – Friday**
- **Time: 11:00**
- **30-minute presentation**
- **Group size: 150**



Ocean Treasures

Children will have fun developing their observation and descriptive skills by touching, testing, and talking about objects from the deep blue sea.

- **Grades PS – K**
- **Days: Monday – Friday**
- **Times: 9:00, 9:30, 10:00, 10:30**
- **30-minute hands-on guided activity**



HULA: Hula Implements

Children will have fun developing their observation and descriptive skills by touching, testing, and talking about hula implements.



- **Grades PS – 3**
- **Days: Monday – Friday**
- **Times: 9:00, 9:30, 10:00, 10:30**
- **1 hour program includes 30-minute hands-on guided activity and 30-minute self-exploration of Hawaiian Hall.**

Science of Pōhaku

Step into the sandals of nā po'e kāko'i, master stone craftsmen, who apply their knowledge, culture and science in the making of an adze.

- **Grades 1 – 12**
- **Days: Monday – Friday**
- **Times: 9:00, 9:30, 10:00, 10:30**
- **1 hour program includes 30-minute guided demonstration of Hawaiian traditions and 30-minute personalized Pōhaku collection presentation.**



PASTIMES: Art & Science of Surfing

Surfs up! Discover the history of surfing in Hawai'i through surfboard collections, archival photos, and short films. Learn the cultural and scientific evolution of surfboard design. Make your own miniature surfboard.



- **Grades 4 – 12**
- **Days: Monday – Friday**
- **Times: 9:00, 9:30, 10:00, 10:30**
- **1 hour program includes 30-minute guided presentation of Hawaiian traditions and 30-minute hands-on activity.**

PROGRAM REQUIREMENTS

Group size: Minimum 10, Maximum 60 (Larger groups will be split up. Our programs are designed for smaller groups.)
Required number of chaperones: Kindergarten: 1 adult per 5 students · Grades 1-12: 1 adult per 15 students

General astronomy shows:

All of the shows in the newly remodeled Jhamandas Watumull Planetarium feature live, hands-on activities.

The Moon Show

Students observe the moon on different nights of the month under the planetarium sky, trying to predict which phase will appear when. Each student then creates a model of the sun-earth-moon system to understand what causes the phases of the moon. We also explore the cause of lunar and solar eclipses.

- Grades 4 – 12
- Days: Monday – Friday
- Times: 9:00, 10:00
- 45-minute show



The Planet Show

Find the planets in our current night sky and learn how planets are different from stars. Explore the planets as we've studied them through telescopes for the last four centuries. Then get a close-up view of our eight fellow planets as seen by NASA spacecraft.

- Grades 4 – 12
- Days: Monday – Friday
- Times: 9:00, 10:00
- 45-minute show



The Explorers series



The Explorers series, created through an education partnership between NASA and the Bishop Museum, looks at different explorers of the past, present and future.

Explorers of Polynesia

Come along and rediscover Polynesian navigation. We will take a voyage from Hawai'i to Tahiti in the planetarium. The students will navigate the *Hōkūle'a* from Tahiti back to Hawai'i using the stars

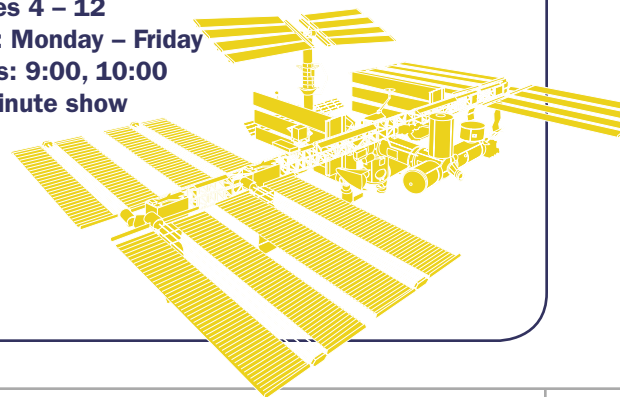
- Grades 4 – 12
- Days: Monday – Friday
- Times: 9:00, 10:00
- 45-minute show



Explorers of the International Space Station

Join a crew on a future mission to the completed space station. We explore the greatest peacetime international project in history. During the live sections, learn where and when to look for the space station in our Hawaiian sky.

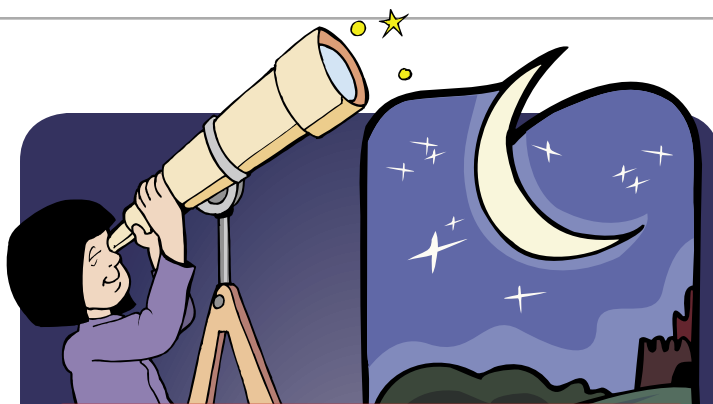
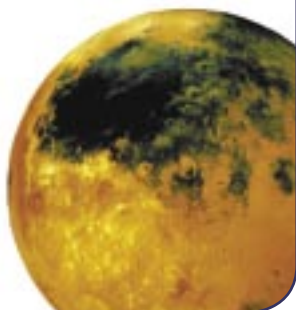
- Grades 4 – 12
- Days: Monday – Friday
- Times: 9:00, 10:00
- 45-minute show



Red Planet Mars

Find Mars in the planetarium night sky. Learn to tell it apart from the other planets and stars in the night sky. Hear about the “canals of Mars.” We will discuss science fiction ideas of Martians and we’ll share the discoveries made by NASA’s space missions to the red planet, and get an update on other active missions in our solar system.

- **Grades 4 – 12**
- **Days: Monday – Friday**
- **Times: 9:00, 10:00**
- **45-minute show**



Planetarium shows for younger children:

Stories Under the Stars

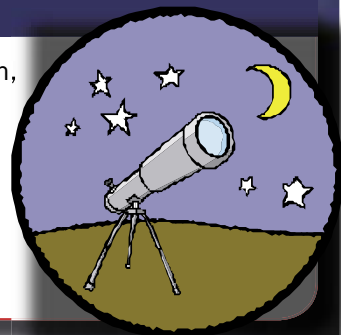
An introduction to the night sky featuring constellation stories from several different cultures.



Up in the Sky

A tour of our sky: sun, moon, planets, falling stars.

- Grades Pre – K, K – 3**
- Days: Monday – Friday**
- Times: 9:00, 9:30, 10:00, 10:30**
- 30-minute show**



Explorers of Mauna Kea

Geology, culture and astronomy come together in this program which examines the “White Mountain” on the Big Island of Hawai‘i. In a hands-on section, students become a model of the many-mirrored Keck telescope.

- Grades 4 – 12**
- Days: Monday – Friday**
- Times: 9:00, 10:00**
- 45-minute show**



Observatory session

The Bishop Museum observatory is available for booking. Observe sun spots and see how a telescope works.

- Grades 4 – 12**
- Days: Monday – Friday**
- Time: 10:00, 11:00**
- 30-minute session**

The sky in motion

Combine your observatory visit with a kinesthetic activity in which students use their bodies to model the solar system, learning such concepts as seasons, the ecliptic, and the zodiac.

- Grades 4 – 12**
- Days: Monday – Friday**
- Time: 9:00, 10:00**
- 30-minute session**

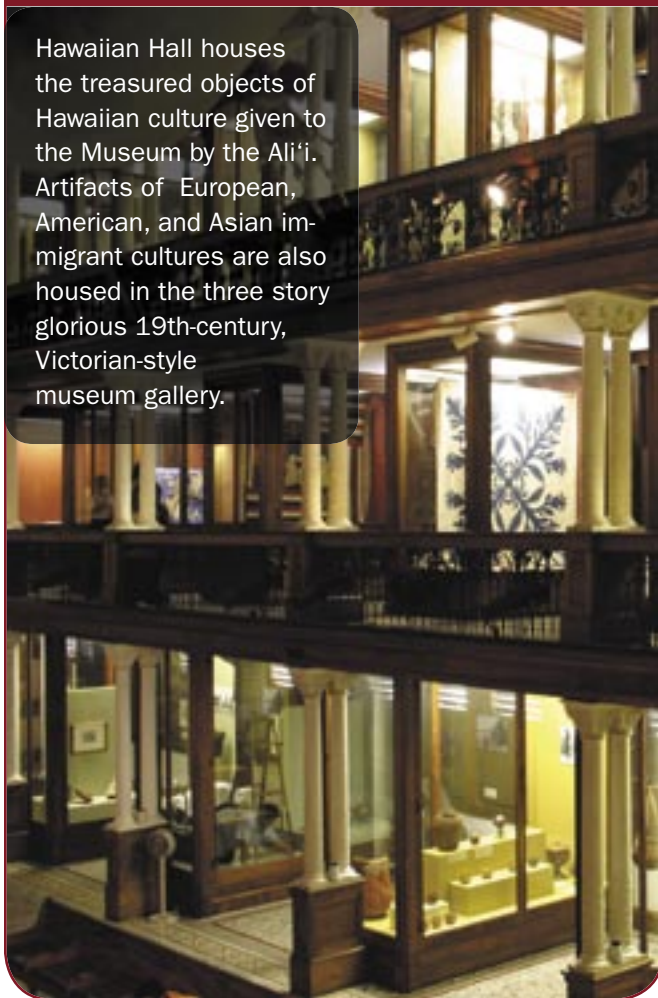
PROGRAM REQUIREMENTS

Group size: Minimum 10, Maximum 60 (Larger groups will be split up. Our programs are designed for smaller groups.)
Required number of chaperones: Kindergarten: 1 adult per 5 students · Grades 1-12: 1 adult per 15 students

Continuing Exhibits

Hawaiian Hall

Hawaiian Hall houses the treasured objects of Hawaiian culture given to the Museum by the Ali'i. Artifacts of European, American, and Asian immigrant cultures are also housed in the three story glorious 19th-century, Victorian-style museum gallery.



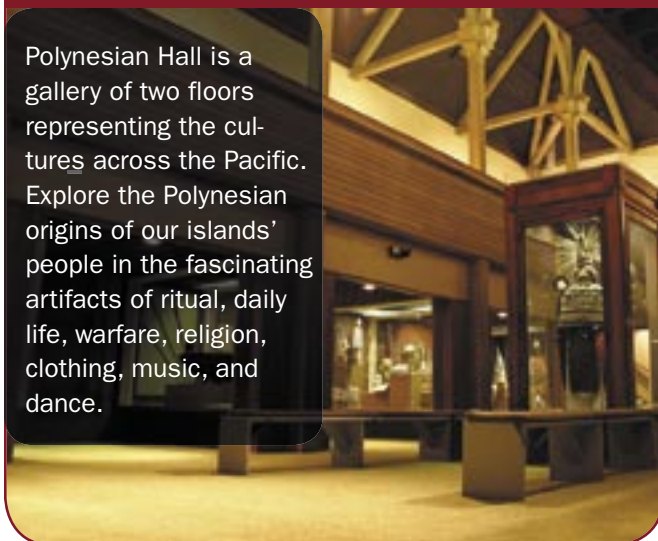
Kāhili Room

The Kāhili Room honors the cherished Ali'i and displays the precious kāhili (feather standards) associated with them.



Polynesian Hall

Polynesian Hall is a gallery of two floors representing the cultures across the Pacific. Explore the Polynesian origins of our islands' people in the fascinating artifacts of ritual, daily life, warfare, religion, clothing, music, and dance.



Hawai'i Sports Hall Of Fame

The Hawai'i Sports Hall of Fame records for all time, with pictures and memorabilia, the outstanding accomplishments of Hawaii's sports heroes. The primary goal of this exhibit is to encourage our youth to emulate these outstanding athletes for their devotion, dedication, pursuit of athletic excellence, and steadfast character.



Upcoming Traveling Exhibits

Exhibits and dates are subject to change

If these walls could talk

October 2004 ~ January 2005

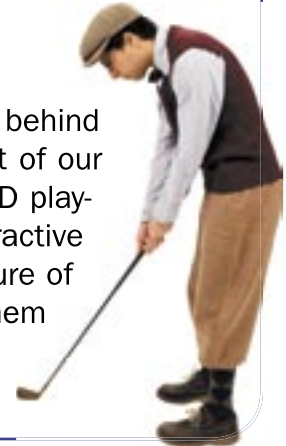
From classical physics to new findings in environmental science and from deeply held cultural beliefs to spectacular feats of engineering, buildings can reveal fascinating stories of human ingenuity and science. Developed by the Minnesota Science Center, this exhibit features 20 interactive components and an “object theater”—an innovative theater in which film, music, and three-dimensional objects are used to tell a story.



strange MATTER

February 2005 ~ May 2005

This exhibit from the Ontario Science Centre uncovers the surprising science behind the things we use every day. Materials with amazing qualities are also part of our everyday lives, from basketball backboards and cell phone antennas to DVD players and golf clubs. This 6,000 square foot exhibition offers scores of interactive experiences, allowing people of all ages to investigate the structure of exotic, as well as of ordinary materials, and discover what gives them their intriguing and remarkable properties.



REPTILES REAL & ROBOTIC

May 2005 ~ August 2005

A traveling exhibit from Kokoro, visitors will stroll into a jungle where giant robotic reptiles are perched at every turn. They will see a larger-than-life Jackson chameleon, a giant Western diamondback rattlesnake, a Nile crocodile, and an Alligator Snapping Turtle. Learn about reptile evolution, what they ate, and what they symbolize in cultures from around the world.



Teacher's Checklist

Call the Education Department for reservations

Monday through Friday,
7:30 a.m. - 3:30 p.m. at 848-4168

RESERVATIONS

Please have the following information ready:

- Three desired dates
- Number of students
- Grade or Class
- Program selection
- Leader/Contact person
- School/Address/Phone

FEES

Student Fees:

- Exhibits/Guided Programs **\$3.00**
- Planetarium Program only **\$3.00**
- Combo: Exhibits/Guided tour & Planetarium programs **\$4.00**

Extra Adult Fees:

- Exhibits/Guided Programs **\$5.00**
- Planetarium Program only **\$5.00**
- Combo: Exhibits/Guided tour & Planetarium programs **\$6.00**

- Passes or discounts cannot be applied to the school visit fees.

To comply with reservation requirements, you must:

- Make reservations at least two weeks in advance.
- Have a minimum of 5 students.
- Be a Hawai'i-based school.
- Have students in Preschool - Grades 12.
- Bring the required number of chaperones.

Groups making reservations less than two weeks in advance:

- \$5 per student and \$5 per required adult.
- Planetarium not available.
- Guided tours not available.

There is a \$100 minimum fee for a private Planetarium show.

SUPERVISING ADULTS/CHAPERONES

To maintain a quality experience for all of our visitors, please remember that you must bring the required number of supervising adults. Required adults are FREE unless otherwise specified.

- Preschool - K: 1 adult per 5 students
- Grades 1 - 12: 1 adult per 15 students

PAYMENT

- School purchase orders are preferred.
- Checks or cash are accepted.
- Pre-payment may be sent in anytime after receiving confirmation packet.

CANCELLATION/SCHEDULE CHANGES

- Cancellations and schedule changes should be called in as soon as possible.
- Refunds are issued if cancellation is made one week prior to your visit.

CONFIRMATION/TEACHER PACKET

The following are included:

- Information for Planning Visit
- School Visit Pre-Payment Form
- School Visit Schedule
- School Visit Check-In Form
- Map of Grounds
- Teacher evaluation of visit

Please review all materials prior to your visit.

Lunch

- You are welcome to schedule to have lunch on the grounds of the museum.
- All lunches must be placed in labeled boxes or containers.
- A designated museum site is provided for storing lunches.

All Hawai'i teachers may visit the museum **FREE** any day prior to your scheduled visit to become familiar with the Museum grounds and exhibits. Please show your I.D. at the front desk.

Museum Sleepovers

Come spend the night at Bishop Museum!

You and your class will go on an exclusive tour through select exhibit halls, see a Planetarium show, participate in a demonstration and hands-on activities, and sleep amidst the gallery's fascinating exhibits. This program includes a late night snack and a light breakfast the next morning.



Call the Education Department Office at 848-4127 to reserve your overnight adventure today!

- **Grades 3 – 12**
- **Time: 6:00 p.m. – 8:00 a.m.**
- **Cost: \$30.00 per student**
- **One adult chaperone is required for every 10 students**
- **Required chaperones are FREE**
- **Group Size: Minimum 15, Maximum 60**
- **\$100 non-refundable deposit is required to reserve a date**



50% off Sleepover Prices!

Special offer to schools with more than 50% of their students on free/reduced lunch.

Thanks to the generous support of the Bretzlaff Foundation, Bishop Museum can extend a discounted sleepover price (50% discount, or \$15 per student) to schools with more than 50% of their students on free or reduced lunch program.

Schools must meet all of the following criteria to qualify:

- 1) School administrator must certify their free/reduced lunch count as a percentage of their total enrollment.
- 2) Elementary schools only, grades 3-6.
- 3) Schedule the sleepover for Tuesday, Wednesday, or Thursday evening.

In order to accommodate as many qualified schools as possible, no more than 60 students per school will receive the 50% discount for sleepovers during the school year. Offer is valid as long as funds are available, so we encourage you to make a reservation as soon as possible. Please call 848-4127 if you have questions or would like to reserve a date.

Museum After Dark Program

Enjoy an adventure-filled evening at Bishop Museum. Join us for demonstrations and hands-on activities, a guided tour of Castle Memorial Building and Hawaiian Hall exhibits, and an exciting Planetarium show. A snack will be included. Reserve your evening adventure today! Call the Education Department Office @ 848-4127.

- **Grades 3 – 12**
- **Time: 5:00 – 9:00 pm**
- **Cost: \$15.00 per student**
- **One adult chaperone is required for every 10 students**
- **Required chaperones are FREE**
- **Group size: minimum 10, maximum 60**

Lending Boxes

Check it out...literally! Take a variety of Museum replicas, teaching tips, teacher reference materials, student books, and artifacts into your classroom. The Education Department provides a number of interactive Lending boxes to enhance your curriculum. Lending boxes are appropriate for grades K – 12 unless otherwise specified.

Bring the Museum to Your Class!

Lending Boxes may be borrowed for a one-week period by any O'ahu school for a fee of \$15, two weeks for \$20.

- Reservations required
- Payment may be made by cash, check or purchase order
- \$5 fee per working day for late returns
- Call the Education Department Office @ 848-4127 to reserve a Lending Box

Dinosaurs (K – 6)



Roar with the Dinosaurs!
You'll have lots of DinoFun crafting your own dinosaur puppets and playing dinosaur games.

Fishhooks And Fishponds



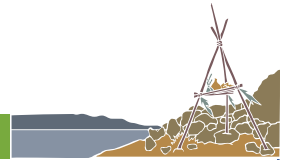
Get hooked! Take a look at traditional Hawaiian fish-hook replicas along with the tools that were used to make them. Included is a video containing excerpts from two films, "Ke Kai: The Sea" and "Ka Hana No'eau Hawai'i."

Hawaiian Games and Sports



Develop your motor skills playing 'ulu maika and moa pāhe'e on the playing field or sharpen your mind with quiet games such as kōnane and kimo. Included is a videotape, "Pae I Ka Nalu: Surfing in Hawai'i."

Kaho'olawe (K – 12)



Experience Kaho'olawe and its rich history through hands-on interaction with more than thirty natural and cultural objects, contemporary and historic photographs, a map, an award-winning book, a CD-ROM, videotapes and more!
A full-scale teacher packet with thirty lesson plans and teacher background materials is included.

Ka Lei: Feather



This is a "must experience" for you and your students. Learn how the treasures of the Ali'i were made.

Ka Lei: Shell and Seed



"Sew" the seeds of land and sea. Develop an appreciation for the intricacy and skill involved in making lei pūpū and lei hua.

Korean Centennial



Celebrate the Korean heritage centennial! Try your hand at mask-making, playing Yut (board game) & twinkle (jacks), and telling the tale of Tangun (Korean Creation Myth).

Sharks



Take a bite out of the mystery of this fascinating species and study small freeze-dried sharks, shark jaws, and fossil shark teeth. You'll even examine a "mermaid's purse." Included is the video "Sharks: Fact and Fantasy."

Volcanic Rocks



You'll erupt and flow with knowledge after viewing the video "Inside Hawaiian Volcanoes," and examining 13 different volcanic rock specimens.

Whaling



Thar she blows! Get up close and personal with the story of whaling in Hawai'i and throughout the world. Experience the giants of the deep and the people who hunted them using objects, photographs, and lesson plans.

Ola Nā Mo'olelo Living Stories

The Excitement of History and
Culture Comes Alive!

Outreach Program

A traveling history program that brings live
dramatic storytelling and cultural artifacts
TO YOUR SCHOOL!

Ola Nā Mo'olelo, or Living Stories, are dramatic storytelling presentations that are designed to bring the excitement and intrigue of historical and cultural events to life. Each of the presentations includes costumes and artifacts that enable students to experience history in a more engaging and authentic manner. The presentations are designed to address the Hawai'i Content and Performance Standards (HCPS II) for Social Studies.

'UMIALĪLOA

Journey to Waipi'o Valley of the 15th century and meet 'Umiāli'oa. 'Umi was a loved and revered Ali'i. 'Umi experiences many challenges and victories, thus leaving a multitude of legacies for future reigning chiefs.

DAVID LA'AMEA KALĀKAUA

Meet the first sovereign to circumnavigate the globe, King David La'amea Kalākaua. Given the nickname, "Merrie Monarch," Kalākaua helped to restore pride and dignity to the Native Hawaiian people. Hear songs written by and for the King and experience the challenges that marked the ending of the monarchy in Hawaiian history.

E HOLO ANA

Voyage on a sailing canoe and learn the ancient art of Polynesian navigation using the stars. Hear some of the creation myths that are a part of our Native Hawaiian culture. E Holo Ana teaches of Maui and his magic fishhook, Manaiakalani, Ho'ku'pa'a, La'amaikahiki, and the 1976 maiden voyage of the *Hōkūle'a*.

JOHN KANAKA – THE WHALER

Travel the waters between Hawai'i, Alaska, and Massachusetts on a whaling vessel and meet John Kanaka. A native from Hawai'i, John Kanaka leaves his home to become a crewmember on a whaling ship, armed with the beliefs and traditions of his culture.

KAMEHAMEHA IV – LIHOLIHO

Learn about Liholiho (King Kamehameha IV) and his wife, Queen Emma. Experience the challenges they faced in the political realm during the early 1800s and learn of the many lasting legacies left by them.

Program Information:

- Grades 3 – 12
- Pre and post lessons available
- Hawai'i Content and Performance Standards:
Change, Continuity, Causality
Historical Empathy
Historical Perspectives and Interpretations
Governance/Power/Authority
Cultural Dynamics/Change and Continuity

Program Fees

For program fees, or to schedule a program at your school, please call 848-4168.

For more information, please call 848-4168 and request an Ola Nā Mo'olelo brochure.



Outreach Program

A traveling science program that brings exciting, hands-on science TO YOUR SCHOOL!

Led by inspiring science educators and scientists, the programs are designed to address national and state science standards. In these fun and interactive programs, students act as scientists engaged in the process of scientific inquiry as they work with specimens, artifacts, and state-of-the-art equipment. Programs can be presented during school hours or for special family or community weekend or evening events.

What teachers are saying about Holoholo Science ...

“Best special program for students I’ve had in 30 years of teaching.”

“This is very important work. This is exactly what science education needs to be doing if we want kids to become scientists.”

“It was very beneficial and we know that we can count on the Bishop Museum to provide very knowledgeable people!”

Let us ignite your students’ curiosity!

To schedule a program at your school, please call 847-8239 or contact us at holoholo@bishopmuseum.org

A Holoholo Science brochure is also available for more in-depth information on each outreach program.

Program fees

Assemblies/Large Groups

\$250 - \$450
20% discount for Title I schools

Classroom Programs

\$375 for up to 3 sessions (same program)
\$75 each additional session
20% discount for Title I schools

StarLab Portable Planetarium

Half Day. \$375
Full Day. \$600
20% discount for Title I schools

Combo Package. \$1100
Themes: Space Science, Hawaiian Islands
Geology and Ecology

Family Science Night. \$800

Available Dates

O’ahu

Reservations are open year-round.

Kaua’i

March 7–11, 2005
(Reserve by January 21)

Moloka’i

October 18–22, 2004
(Reserve by September 10)

Lana’i

May 9–13, 2005
(Reserve by March 25)

Maui

December 6–10, 2004
(Reserve by October 22)

Big Island

January 24–28, 2005 (Hilo)
January 31– February 4, 2005 (Kona)
(Reserve by December 10)

Educators' Open House! October 13, 2004

Come to our Educators' Open House on October 13, 2004 from 4 to 8 p.m. at the Bishop Museum! Free for all educators. Get a preview of all of this year's educational exhibits and programs. Free pūpūs! For information and reservations for the Educators Open House, please call 848-4168.



Bishop Museum Day Camp Programs with Kama'āina Kids

Programs Offered:

- Fall Intersession Program
- Winter Intersession Program
- Spring Intersession Program
- Summer Day Camps
- Hours: 6:00 a.m. – 6:00 p.m.

In partnership with Kama'aina Kids, our Day Camps provide exciting, enriching, and fun experiences for children from grades K through 6.

Each Intersession & Summer Day Camp is thematically based around the current Bishop Museum exhibits. These programs allow the children to have an in-depth and hands-on experience with each exhibition. In addition, these programs offer off-site excursions and recreational activities.

Please call 262-4538 to register or for more information.

www.kamaainakids.com

Guides & Materials

Teacher guides and curriculum materials are available to supplement the permanent and changing exhibits for 2004-2005: If These Walls Could Talk, Strange Matter, and Reptiles. Please call 848-4168 to have any of these guides sent to you. Curriculum materials are also available on our website.

Educator's Workshops, Programs, & Lectures

Year-round events will be publicized through periodic mailings and updated e-mails. Please call the Education Department Office at 848-4168 to be added to the mailing list.

For more information regarding program and material fees, call our Education Department Office at 848-4168.



"...Her love for the young was great, and it was a pretty sight indeed to see her surrounded by a group of children to whose pleasure she was ministering."

from Memoirs of
Hon. Bernice Pauahi Bishop
By Mary H. Trout,
1908, by Charles R. Bishop

Mahalo to our Sponsors

Bishop Museum's exhibits and programs are made possible through generous support from the following organizations.

The Boeing Company

Bretzlaff Foundation

Ellen M. Koenig Memorial Fund

Hawaiian Electric Company, Inc.

Horizon Lines

Horizon Lines, LLC

Institute for Museum & Library Services

Moonglow Fund

NASA

Native Hawaiian Culture and Arts Program

The Samuel N. & Mary Castle Foundation

State Foundation on Culture & the Arts

The William Randolph Hearst Foundation

U.S. Department of Education

U.S. Department of Labor

Victoria S. and Bradley L. Geist Foundation

Bishop Museum education programs are supported in part by the U.S. Department of Education, Office of Innovation and Improvement's Educational through Cultural & Historical Organizations (ECHO). The ECHO initiative provides educational enrichment to native and non-Native children and lifelong learners

ECHO has provided \$625,000 to support Bishop Museum education programs for the 2004 - 2005 school year. This covers approximately 60 per cent of the museum's educational programs.

